



Technical Specifications

System 2020™ Indicator/Controller

Weight Display Indicator and Process Controller

Process industry needs include flexibility, ease-of-use, connectivity, and reliability. KM's weight-based system addresses them all. Flexibility is inherent in the design approach of this instrument. The System 2020 is available in several basic configurations with enough options to tailor it to your specific system application.

The System 2020W is a weight indicator that is compatible with most weighing platforms; it can be configured for single or multi-vessel applications and offers optional capabilities to accept independent load cell inputs to ensure optimum performance and lowest down-time. The signal conversion rate and internal resolution ensures fast, precise, repeatable measurements for both static and in-motion weighing.

The System 2020B is a multi-ingredient batcher. Up to four ingredients can be managed with continuous or batch modes.

The System 2020M provides control of in-motion weighing via the Rate of Change (ROC) features. The ROC setup will instruct the 2020M to calculate ROC for flow rate or weight/time applications.

Communication networks are the central nervous system of modern manufacturing and processing facilities. The System 2020 standard I/O consists of 4 Serial Comm ports, 4 setpoint I/O ports, and one analog scale/sensor input. Communications options consist of popular Fieldbus interfaces (DeviceNet, ProfiBus, ControlNet, InterBus, Modbus Plus, EtherNet 10/100, EtherNet/IP, ModBus TCP, TCP/IP sockets, HTTP, SMTP, and FTP). If independent load cell inputs, sensor fault detection and correction is a requirement, the SensorComm™ input option can be employed, ensuring the critical processes continue. All this feature rich flexibility is housed in a NEMA 4X Stainless Steel enclosure.



Features & Benefits

Discrete Sensor Inputs

Allows instant determination of failed load cell.

Available in Indicator, Batcher or In-Motion Weighing Configurations

More choices in features and flexibility.

Multiple Scale Display

Simultaneously present data for up to eight independent weighing systems.

Compatible with Most Weighing Platforms

Assured compatibility and technology bridge.

Stainless Steel, NEMA 4X Enclosure with Swivel Mount

Long term reliability in harsh environments including corrosive and washdown.

Approvals:



Specifications

Power Input: Universal 85-265 VAC, 50/60Hz, 75VA

Excitation: 10 volts DC Typical; 16, 6, 5 Available
Up to thirty-two 350-ohm weight sensors

Operational Keys: Zero, Tare, Print, Units, Select, Enter, Escape, Clear, 0-9/Alpha, Decimal Point and five softkeys

Operational Annunciators: Displayed symbols indicate motion, center of zero, unit of measure and more

Display: Dot graphic display, 5"W x 1.33"H provides images and up to eight lines of weight and/or text, 240 x 64 dots cold cathode fluorescent backlit, white on blue

Display Characters: User definable, 1.16" to 0.145" high

Display Rate: Selectable, from 1 in 10 seconds to 10 times per second

A to D Conversion Rate: 60 times per second

Unit of Measure: Pounds, kilograms, grams, ounces, pounds and ounces and four programmable custom units

Incremental Selections: Multiples and sub multiples of 1, 2, 5

Decimal Locations: 88888888 pick any location relative to division size

Displayed Resolution: Up to 1 part in 10,000,000

Audio Output: Audio tone for key contact assurance or operational alarms

Time and Date: Battery protected real time clock is standard

Digital Filtering: Fully programmable to minimize noise and vibration

Memory: 128K (expandable to 8 MB)

Standard Input and Outputs:

Com 1: RS232, RS-485/422, SensorComm™

Com 2: RS232, 20 mA current loop

Com 3: RS232, RS-485/422, SensorComm™

Com 4: RS232, RS-485/422, SensorComm™

(One bi-directional signal per port)

Four setpoint I/O ports via OPTO 22 I/O modules

1 Analog scale input

PS/2 Keyboard port

Dimensions: 7.25"H x 11"W x 8.25"D (184 mm x 279 mm x 205 mm)

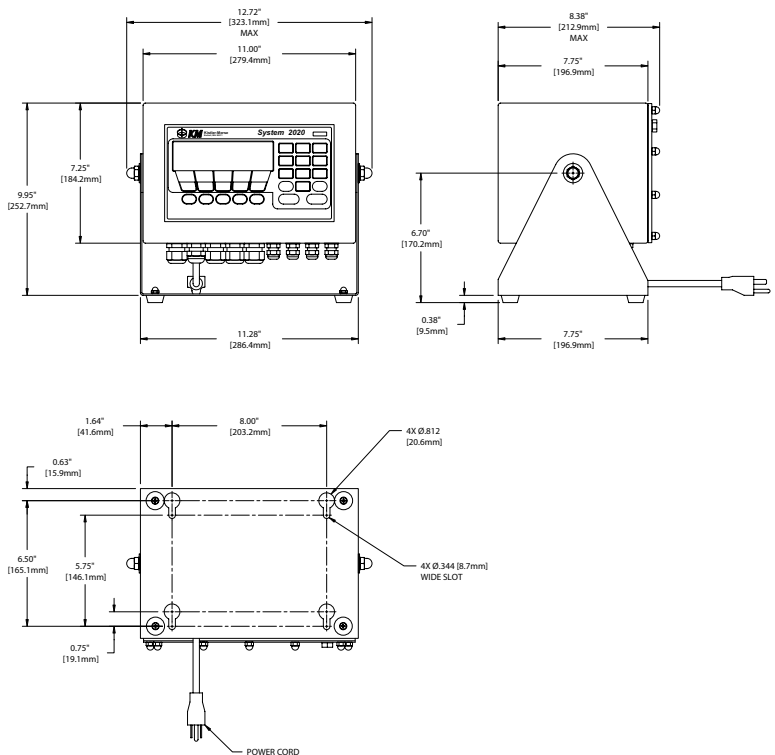
Available Fieldbus Network Interfaces:

DeviceNet™, ProfiBus™, ControlNet™, InterBus-S, ModBus Plus, Ethernet 10/100 (ModBus TCP, TCP/IP (sockets), HTTP, SMTP, FTP, EtherNet/IP)

Operating Temperatures: 14 to 104°F (-10 to 40°C), 10 to 90% relative humidity

Enclosure: Stainless steel washdown enclosure NEMA 4X

Weight: 17 lbs., 7.7 kgs



KM is represented in your area by:



WORLD HEADQUARTERS

150 Venture Boulevard
Spartanburg, SC 29306 USA

1.800.426.9010

tel: 864.574.2763

fax: 864.574.8063

kistlermorse.com

